

# Lakeland College **CAMPUS** Life



Campus Housing ..... 2

Arthur M. Krueger Hall ..... 3

Muehlmeier Hall and  
Grosshuesch Hall ..... 4

Broetz Hall ..... 5

Friedli Hall and  
Hofer Hall ..... 6

Hill House, Morland House  
and Kurtz House ..... 7

South Hall ..... 8

Campus Activities ..... 9

Campus Learning  
Resources ..... 11

Campus Fitness ..... 12

Campus Meals ..... 13

Campus Map ..... **Back Cover**

# Life is **GREAT** *at* Lakeland College.

From a campus full of comfortable housing options to great food, activities of all kinds, and academic resources to bolster your success, you'll find life is great at Lakeland College. At Lakeland you can be yourself and enjoy all that campus life has to offer.





# MAKE IT YOUR OWN

*Call it home.*

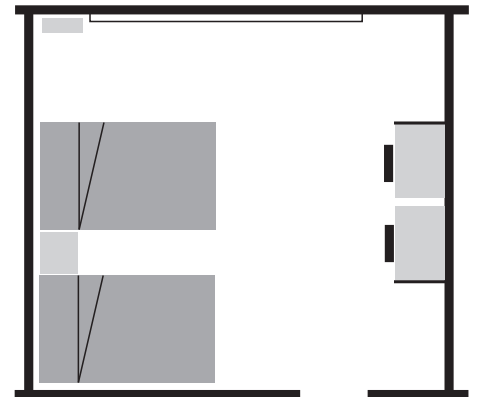
**Housing at Lakeland** is full of the comforts and conveniences of home. In addition to single rooms, double rooms, apartments and pods, you'll find: welcoming lounges; academic labs; computer labs; free wireless Internet service; well-maintained kitchen facilities; and, free laundry services.

All on-campus housing is staffed by qualified people ready to help you. The residence life team includes a director, assistant director, residence hall directors and resident assistants. Together they help build living/learning communities in your hall, suite or apartment and maintain a safe, healthy environment for all residents. The residence life team offers both social and academic programs to provide learning opportunities that are both fun and educational.

# ARTHUR M. KRUEGER HALL

**Krueger Hall, located on the north end of campus,** is a women's residence hall housing 108 students on four floors. Mostly underclass students live in Krueger, but it is open to all students.

Rooms in Krueger are generous in size and carpeted. A main lounge on the first floor is furnished with a big-screen television, piano, computer station and adjacent kitchen. Smaller study lounges are available on the other floors. Krueger has an exercise facility for its residents. All areas of Krueger are alcohol-free and tobacco-free.



Standard layout of a double room in Krueger Hall.

**FACT**

All students living on campus enjoy free wireless Internet, cable, and laundry.

# MUEHLMEIER HALL & GROSSHUESCH HALL

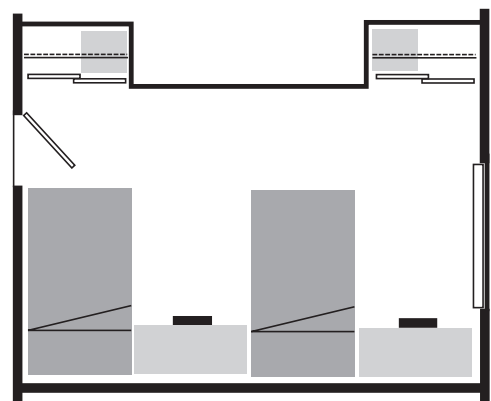
## **Muehlmeier and Grosshuesch are twin halls located near the south end of campus.**

The halls each house 110 students on two floors, and are made up of mostly freshmen and sophomores, but are open to all students.

Muehlmeier is a coed hall, while Grosshuesch is a male facility.

Both halls feature large main lounges furnished with big-screen televisions, computer stations, kitchens, pool tables and ping-pong tables.

All areas of these halls are alcohol- and tobacco-free.



**Standard layout of a double room in Muehlmeier and Grosshuesch Halls.**

**FACT**

security staff is available 24/7 and provides escort service on request.

# BROTZ HALL

[Pods]

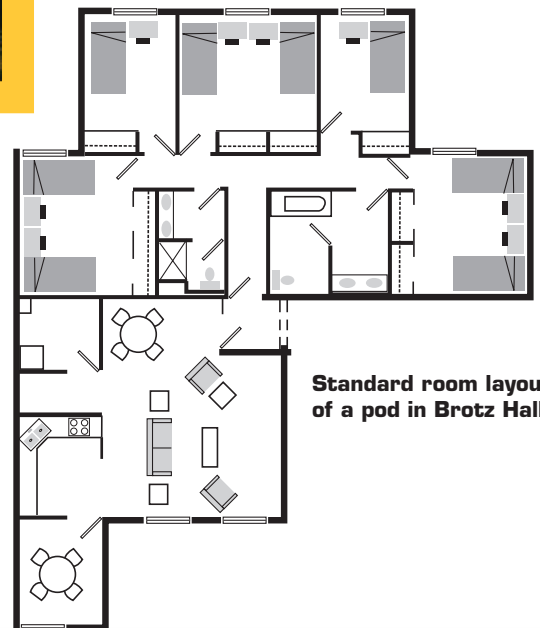


**Brotz Hall, located on the north end of campus,** offers a unique coed facility with room for 96 students on three floors. Most of Brotz Hall's residents are second-year students, but it is open to all students.

Brotz Hall features an apartment-style layout. There are 12 pods with each pod containing three double rooms, two single rooms and two restrooms with shower and bath. A pair of pods share a large living area, kitchen and study. The bedrooms are large and fully carpeted.

Common areas include a comfortable lounge with fireplace, a computer lab, classrooms and plenty of study space. Brotz Hall is both alcohol- and tobacco-free.

**Brotz Hall is air-conditioned and features a welcoming lobby and fireplace for relaxing and catching up with friends.**



**FACT**

Free shuttle service throughout Sheboygan County is provided to all students living in campus housing.

# FRIEDLI HALL & HOFER HALL

[Suites]



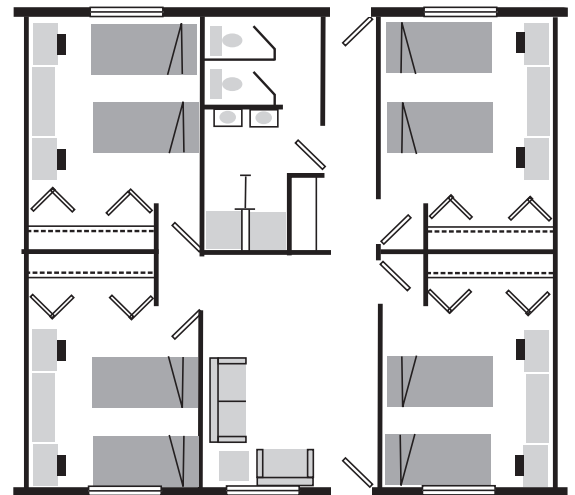
Residence hall room beds are bunkable so that students can free up floor space for more room to study and relax with friends.



**The suites in Friedli and Hofer**, found on the north end of campus near the Wehr Center, offer suite-style living for upperclass students.

Each suite contains four double bedrooms and shares a bathroom and furnished living area. The Hofer side of the suites houses chapter rooms for Lakeland's six Greek organizations.

The suites in Friedli and Hofer offer easy access to nearby student parking lots and a short walk to the Fitness Center, football field and other campus facilities.



Standard room layout of a suite in Friedli and Hofer Halls.

**FACT**

study areas in each hall include desks, computers with Internet access and a printer for residents' use.

# HILL HOUSE, MORLAND HOUSE & KURTZ HOUSE

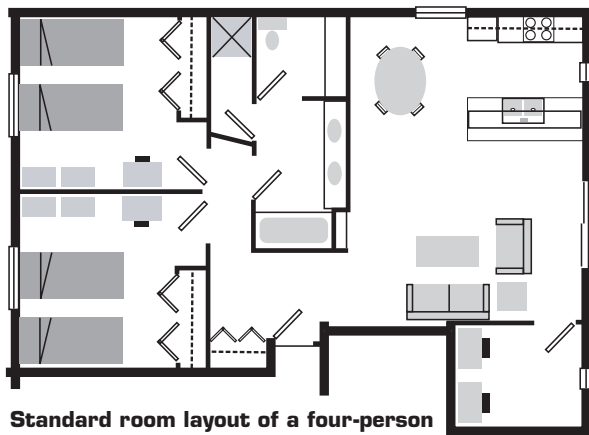
[Apartments]



**Upperclass students have the option** to live in Lakeland's on-campus apartments located on the south end of campus.

Hill and Morland Houses are four-person apartments with two double rooms, large living room, kitchen and study lounge. Kurtz House offers six-person apartments with two double rooms, two single rooms, two restrooms, large living room and kitchen. Together, all of the apartments house 112 students.

All three houses are fully furnished, air-conditioned and have carpeted living rooms and bedrooms. The houses also have lockable storage rooms within each four-unit section and feature either a patio or deck that overlooks the campus lagoon. All three houses have adjacent student parking.



Standard room layout of a four-person apartment in Hill and Morland Houses.



Students can make their own food in the kitchens of on-campus apartments.

**FACT**

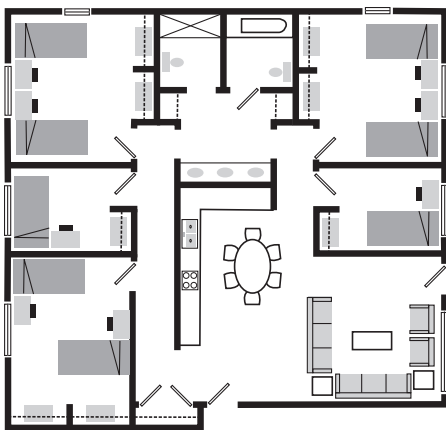
Quiet and courtesy hours are in effect after 10 p.m. Sunday to Thursday and after midnight on weekends.



# SOUTH HALL



**South Hall offers attractive new spaces for students to gather, relax and study.**



**Standard layout of apartment-style pods in South Hall.**

**Lakeland's inviting two-story South Hall** is an "L" shaped building that consists of two housing sections separated by a common activity area. It features 64 beds in eight student housing pods, similar to the popular apartment-style layout of Brotz Hall. Each housing pod in the new hall includes three double rooms, two single rooms, a living room, kitchen and two restrooms sharing a common counter area.

The common activity area on the first floor is two stories high and includes a commons room, restrooms and small kitchen. It features a large fireplace and is designed for relaxation, studying, meetings and special events.

**FACT** *snack and beverage machines are located in each residence hall. Items may be paid for using your student identification card account.*

# activities | events | organizations

Have fun. Be involved.

## Student Activities

The Office of Student Activities (OSA) provides numerous on and off campus opportunities and programs ranging from social activities to community service and leadership development opportunities. In addition to working directly with over 40 recognized student organizations, including six fraternities and sororities and the LC-Campus Activities Board, Student Activities plans and implements Lakeland College's orientation programs. Active involvement in Lakeland College student organizations provides students with great opportunities to gain valuable skills that will complement an academic education and make them more well-rounded individuals.

## Student Association

The Student Association serves as the official representative of the student population for the college and the wider community. Its purpose is to improve the quality of life within the college community and to preserve and promote high values. It welcomes participation by all students.

## Athletics

Lakeland College boasts one of the highest quality athletic programs and some of the best facilities in NCAA Division III. Fan support is an important part of the program's success and attending Lakeland's many sporting events is a favorite student activity. Attractive venues offer fans the opportunity to be close to the action. Frequent Muskie victories make many days "A great day to be a Muskie!"



## Student Organizations

Accounting Club  
Alpha Psi Alpha Sorority  
Association of Information Technology Professionals (AITP) (also part of STE<sup>2</sup>M)  
Badminton Club

Beta Sigma Omega Fraternity  
Black Student Union  
Chemistry Enthusiasts  
CMENC  
Community Service Initiative (CSI)  
Criminal Justice Club  
Dance Team  
ECO-Friends (part of STE<sup>2</sup>M)  
Future Nonprofit Leaders

## Counseling Services

Lakeland provides confidential counseling to students who have academic, financial, personal or spiritual concerns.

## Health Services

The Campus Nurse is a full-time health care professional who assesses health conditions, treats minor illnesses and provides referrals free of charge. A nurse practitioner is also available at Lakeland to assist with treatment, assessment and prescriptive services.

## Shuttle Services

Students on campus can take advantage of the Lakeland shuttle service. The free shuttle service is available to Sheboygan County shopping, entertainment, church and medical facilities.

## Student Employment

Information and counseling regarding part-time jobs, both on and off campus, is available through the Student Employment Office. Part-time job experiences are arranged to help students gain experience in areas of career interest.

## Career Development

Career Development aids students and alumni in developing, evaluating and effectively implementing career plans. Counselors help students decide on majors, obtain occupational information, explore internship opportunities and prepare for purposeful careers after college.



- Global Student Association
- Habitat for Humanity
- The History Club
- Inter-Greek Council
- Japanese Students Association (JSA)
- LC-Campus Activities Board
- LC-Chinese Students Association
- LC-Gay Straight Alliance
- Math Club (part of STE<sup>2</sup>M)

- The Mirror
- Mortar Board
- Mu Lambda Sigma
- Phi Delta Omega Sorority
- Pi Kappa Gamma
- Psychology Club
- Ski and Snowboard Association
- Spanish Club
- Spanish National Honor Society

- Spectrum/Year-disc
- Spiritual Life Council
- STE<sup>2</sup>M (includes Chemistry, Math, AITP, Exercise Science, EcoFriends)
- Student Association
- Student Athlete Advisory Committee
- Student Wisconsin Education Association
- Theatricians
- Zeta Chi Fraternity

# Campus Learning Resources

*Helping you succeed.*

**Lakeland's faculty and staff are committed to helping you get the most**

out of your college experience, and there are plenty of resources on campus to help you learn and succeed.

**John H. Esch Library**

The John H. Esch Library houses approximately 65,000 books and subscribes to over 300 periodicals, including several foreign language newspapers. It is a member of EasiCat, the automated catalog and circulation system for the Eastern Shores Library System. EasiCat provides access to the materials of 13 public libraries and a bookmobile for Lakeland students. The library has a computer lab for student use and subscribes to a number of online databases. Off-campus access to those databases is also available through the Lakeland College website. When you have a question, the library staff is available to assist you in finding materials or using appropriate reference tools.

**Hayssen Academic Resource Center**

All Lakeland students have access to free academic support through the Academic Resource Center (ARC). Specially-trained students are available as tutors in a wide variety of subject areas, and workshops are offered to help develop study skills. Tutors are on hand throughout the day to meet one-on-one with students on a first-come, first-served basis. A computer lab is available for research, completing homework or checking e-mail. Located in Old Main Hall near the center of campus, the Resource Center is a convenient place to study or relax before, between or after classes. ARC staff also coordinates support services for Lakeland students with special needs.



# Fitness facilities and activities

Work out. Participate. Be healthy.

Lakeland's fitness center and intramural sports programs offer students a variety of ways to maintain or improve their physical health.



## Fitness Center

Located in the Todd Wehr Athletic Center, a 4,400-square-foot fitness center is available free to all students, faculty and staff. Equipment in the fitness center includes cardiovascular exercise machines, free weights and a stretching area. Ceiling-mounted televisions offer entertainment during your workouts and fitness center staff is available to help with operating the equipment.

## Intramurals

Intramurals at Lakeland are popular and a great way to participate in activities with your friends. A variety of sports such as dodgeball, basketball, flag football, ping-pong, billiards, capture the flag, kickball and others are offered, with more on the horizon.



Hungry?



of complete salad and deli sandwich bars. A daily menu is available on [my.Lakeland.edu](http://my.Lakeland.edu).

**Grab and Go**

If you're in a hurry, you can stop at the Grab and Go. Open for lunch during the week, it's the perfect place to pick up a quick meal to take with you. It features fresh subs, sushi, chef-style salads and microwave pizzas.

**Muskie Mart**

The Muskie Mart is a convenience store located in Bossard Hall where you can purchase a snack or shop for dinner. The Mart is also a place where you can shop for kitchen and bathroom supplies.

**Muskie Grill**

Within the Muskie Mart is the Muskie Grill, a popular short-order kitchen where you'll find numerous hot snacks such as fries, mozzarella sticks and breaded mushrooms, sandwiches and burgers, chicken pitas and phillys, salads and fruit.

**You are surrounded by great food and great dining options at Lakeland College.**

**Line Meals**

All-you-can-eat line meals are served in Bossard Hall on the second floor of the Younger Family Campus Center. You can enjoy a choice of main entrees, desserts, fruits and beverages, along with all the fixings



## Daily Grind

The Daily Grind is a favorite on-campus coffee bar located in the student lounge of the Younger Family Campus Center. A great place to begin your day, you'll find gourmet coffees served hot, iced and frozen, or you can choose from a wide assortment of teas, chai tea, steamers and hot chocolate. If you are not a coffee or tea lover, try one of the many different smoothie flavors the espresso bar can mix up. The Daily Grind also offers desserts and breakfast items such as cookies, bagels and fruit.

## Pub

The Pub is a casual place where you can hang out and play pool, video games and darts, or watch television. The Pub is also the hot spot to enjoy activities and entertainment such as karaoke, solo musicians, comedians, improv groups and club-style parties. Pizzas and hot pretzels are available for purchase, with soda and popcorn offered at no cost.



## Want to know more?

For more information about campus life at Lakeland College, call 1-800-242-3347 or visit [lakeland.edu](http://lakeland.edu).

Our Residence Life staff, which lives and works in the residence halls, is readily available to answer questions and offer support and guidance to make your college experience rewarding and enjoyable.

Lakeland College actively promotes cultural diversity. We encourage all students to actively participate in creating a welcoming community that values all members without regard to race, color, sex, sexual orientation, national origin, age, religion, marital status, disability or veteran status.



# FINDING YOUR WAY

around campus

## BUILDINGS

- Alumni Pavilion (27)
- Bradley Fine Arts Building (22)
- Chase Science Center (21)
- Ambrose D. Deland Child Care Center (31)
- Esch Library (16)
- W.A. Krueger Hall (14)
- Laun Center (15)
- Ley Chapel (20)
- Maintenance Buildings (12)

- Nash Center (18)
- Old Main Hall (17)
- President's House (10)
- Print Shop (11)
- Verhulst Center (23)
- Wehr Center (29)
- Younger Family Campus Center/Bossard Hall (13)

## RESIDENCE HALLS

- Friedli Hall (30)
- Grosshuesch Hall (6)
- Hill House (5)
- Hofer Hall (32)
- A.M. Krueger Hall (25)
- Kurtz House (3)
- Morland House (4)
- Muehlmeier Hall (7)
- Brotz Hall (24)
- South Hall (9)

## PLACES OF INTEREST

- Baseball Field (33)
- Campus Lake (19)
- Grether Natural Laboratory (26)
- Lagoon (8)
- Soccer Fields (1)
- Softball Field (2)
- Taylor Field (28)



## Get Connected



**LAKELAND**  
◆ COLLEGE ◆

